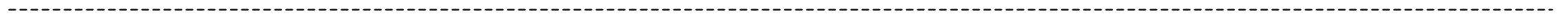
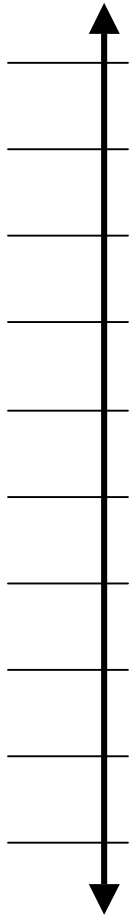
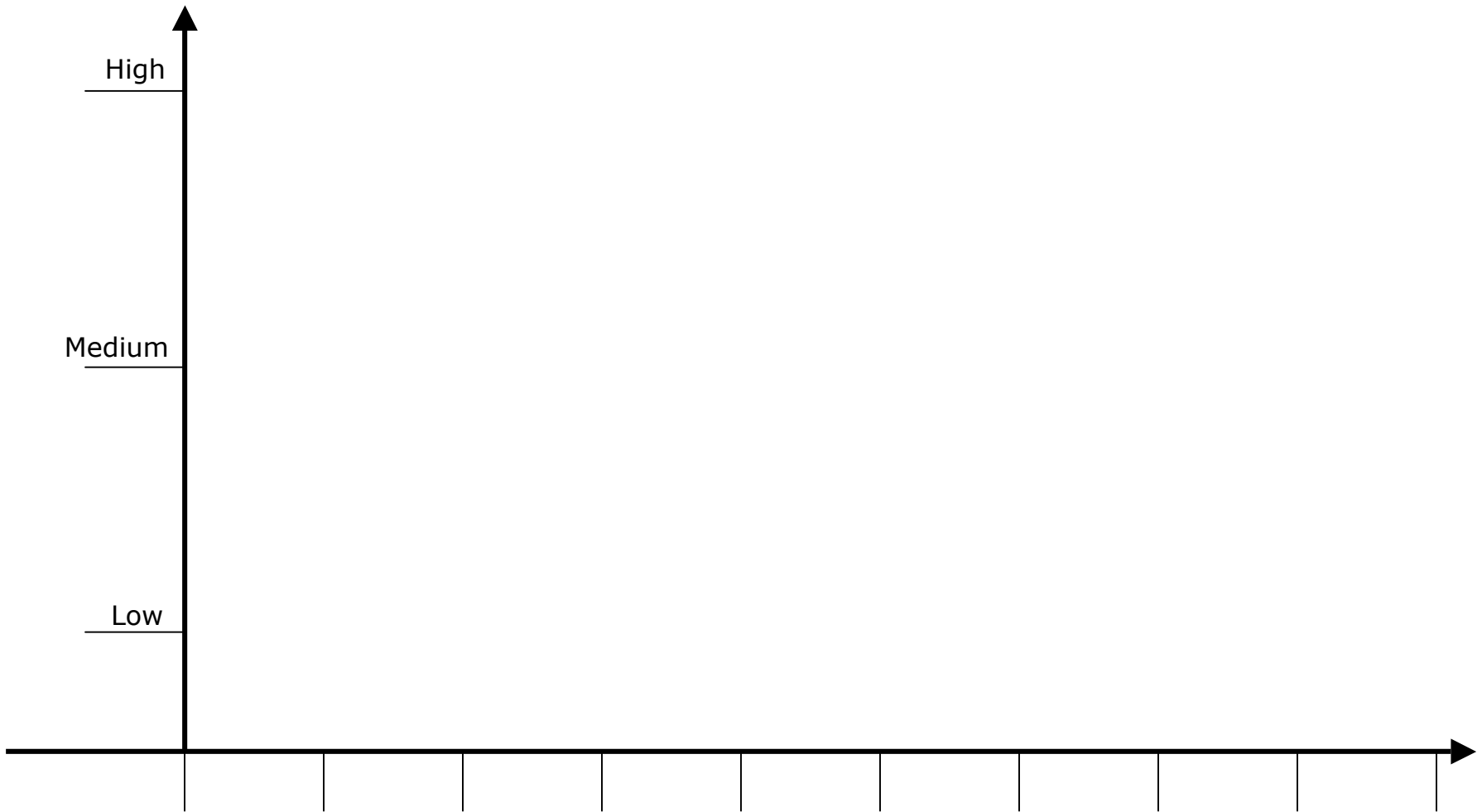



Timeline of Events



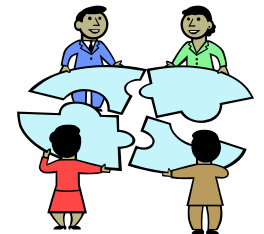
Cut along the dotted line



 **Patterns of Behavior** What trends have been happening?

 Cut along the dotted line

What are the relationships among the parts?



Answer these questions for the beginning, middle, and end of your graph:

What physical structures, laws, and policies have influenced the pattern of change?

Which of these affected results in a desirable vs. an undesirable way?



Underlying Structures

What affected the patterns? How do the parts relate to each other?



Cut along the dotted line

What beliefs and values are evident throughout this time period?
How have these beliefs and values affected the structures over time?



Mental Models

What did people believe, value, think, or assume? What goals did people have?

Iceberg Book Assembly Considerations

1. Copying

- a. Copy the pages separately unless you want students to cut the sheets and if you don't want to use different colors for different layers.
- b. Copy the "Timeline of events" on white as single-sided. The white color represents the tip of the iceberg.
- c. Copy the "Patterns of Behavior" (note that pages 2 and 3 should be double-sided), "Underlying Structures" and "Mental Models" on blue. The blue represents the water. If desired, you can copy the layers in different shades of blue so that the darker shades represent going deeper under the water.
- d. If more than one graph is desired, make additional copies of pages 2 and 3 as double-sided and page 4 as single-sided.

2. Assembly

- a. Cut the "Timeline of Events", "Patterns of Behavior", and "Underlying Structures" along the dotted lines.
- b. Assemble the books by placing the pages in the following order: "Timeline of Events" on top followed by the "Patterns of Behavior", "Underlying Structures", "Mental Models" and a blank white page. Staple the pages together at the top, making sure not to staple in the middle because the students will need to fold the books in the middle.